



Unique Principle Of Operation

The material in process is drawn into the vacuum evacuated versator chamber through the product feed assembly. At the end of the product feed assembly, the specially designed spreader ring spreads the material onto the centre of the rotating versator disc in widening spirals. As the film of material approaches a maximum velocity, it is progressively attenuated – tapering from a few thousandths of an inch to a fraction of a thousandth of an inch. The rotation of the versator disc and the vacuum of the versator chamber create a considerable frictional drag between the Versator disc surface and the material film with unusual levels of shearing force and turbulence. The film of material is on the versator disc surface for only a fraction of a second and is picked up at the versator disc's outer edge by the product discharge (scoop tube) assembly and is discharged from the versator chamber.

Resulting in...

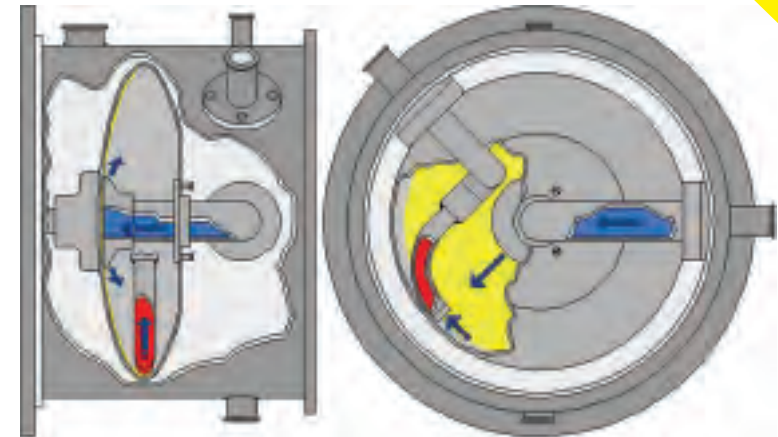
Deaeration, defoaming, degassing – an effective removal of entrapped air, foam or gas. An efficient mixing, blending, homogenising, dispersing, emulsifying action.

The Versators unique process design....

- Does not apply mechanical pressure to the material in process
- Can work on any hot or cold flowable material
- Can work in continuous or batch process
- Creates minimal loss of product
- Is easy to clean with a low amount of maintenance
- Has few parts that are subject to wear

Improves Your Products:

- Appearance
- Composition
- Filling & weight in packaging
- Process
- Production time
- Quality
- Shelf life
- Uniformity



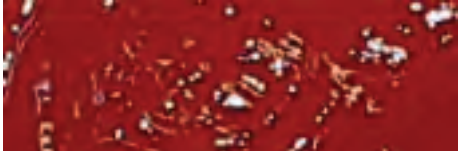




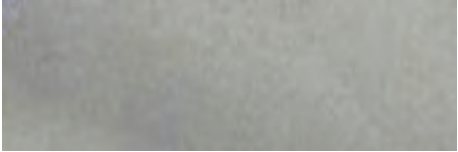


Demonstration
Units available
for on-site testing.
Please contact:
demo@eiger-torrance.com

A Variety Of Applications

- Adhesives
 - Greases
 - Antibiotics
 - Hair conditioner
 - Barbecue sauce
 - Hair gel
 - Body lotion
 - Hair relaxer
 - Candle wax
 - Honey
 - Caulking materials
 - Injectables
 - Cheese
 - Chewing gum
 - Jelly
 - Coatings
 - Organisols
 - Gels
 - Paints
 - Soft drinks
 - Suntan lotion
 - Syrups
 - Tinting colours
 - Toothpaste
 - Shower gel
 - Soaps
- Creams
 - Latices
 - Detergents
 - Lotions
 - Dyes
 - Lubricants
 - Eggs
 - Mayonnaise
 - Emulsions
 - Moisturising lotion
 - Epoxy body fillers
 - Mustard
 - Oils
 - Food products
 - Ointments
 - Ketchup
 - Cosmetics
 - Latex
 - Pastes
 - Peanut butter
 - Pharmaceutical
 - Plastisols
 - Salad dressings
 - Shampoo
 - Waxes
 - Yogurt

Samples Processed Through The Versator:

<u>Before:</u>		<u>After:</u>
	Toothpaste	
	Adhesive	
	Plastisols (after curing)	
	Honey	

D-8 Versator

- Versator Disc: 8" diameter
- Drive: 2 or 3 HP constant or variable speed
- Ratings: Up to 2 U.S. gallons per minute (dependent on material in process)
- Constructions: Stainless steel (right)
Polished/sanitary (far right)
Cold grease (CG) homogeniser

D-16EH Versator

- Versator Disc: 16" diameter
- Drive: 7, 10, or 15 HP constant or variable speed
- Ratings: 1 to 20 U.S. gallons per minute (dependent on material in process)
- Constructions: Carbon steel
Stainless steel
Polished/interior
Polished/sanitary
Cold grease (CG) homogeniser

D-26LH Versator

- Versator Disc: 26" diameter
- Drive: 25HP constant or variable speed
- Ratings: 5 to 125 U.S. gallons per minute (dependent on material in process)
- Constructions: Carbon steel
Semi-stainless steel
Stainless steel
Polished/interior
Polished/sanitary
Cold grease (CG) homogeniser